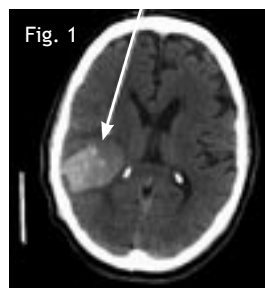


When to Order a CT Scan

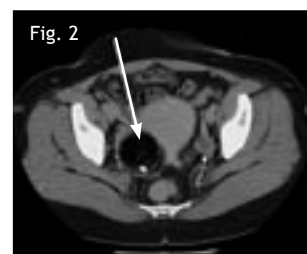
The CT (Computed Tomography) scanner is the workhorse of most current imaging departments. It offers a very fast scan time, high resolution imaging, and the ability to reconstruct images in multiple planes or in 3D. Commonly it is used to rule out intracranial hemorrhage, sinusitis, pulmonary nodules, spinal trauma, neoplasm of the chest, abdomen or pelvis, and causes of abdominal pain such as appendicitis. High resolution imaging also can be performed to rule out occult fractures in any body part, small solid organ or chest lesions and to evaluate the temporal bone structures. CT angiography can be used to evaluate for PE, AAA, dissection, and vascular stenoses in any major vessel.

Here are a few recent studies performed on Swedish Radia's 16 slice Lightspeed CT scanner which assisted in clinical management.

CASE 1: 63-year-old male with left-sided weakness and headache. Noncontrast Head CT demonstrates an acute bleed in the right frontoparietal region.



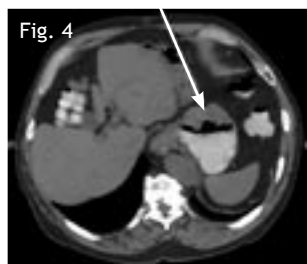
CASE 2: Right lower quadrant abdominal pain in 30-year-old female. Abdominal Pelvic CT performed to r/o apy demonstrates a right adnexal mass containing fat, hair and teeth consistent with a teratoma (dermoid cyst).



CASE 3: 48-year-old male with painless hematuria. Contrast Renal CT demonstrates a small partially calcified left renal cell carcinoma.



CASE 4: 72-year-old male with epigastric pain. Abdominal Pelvic CT demonstrates a lobulated anterior gastric wall neoplasm.



Dear Colleague:

I'm pleased to send you the latest issue of "Update" from Swedish Radia Imaging Center. Six times a year we will send you information about the benefit of the state-of-the-art technology and expertise we provide. Your questions/comments are welcome. Call (425) 394-1724.

Ben Babusis, M.D., Medical Director

CT Imaging at Swedish Radia

Indications and Recommendations

Head/Sinus

- Rule out bleed, mass, hydrocephalus, sinusitis

Chest

- Rule out neoplasm, interstitial disease, adenopathy, PE, dissection

Abd/Pelvic

- Rule out appy, bowel inflammation, stones, neoplasm, biliary obstruction

Trauma

- Rule out fracture or bleed in any body part

CT

- Rule out vascular occlusions or stenoses

Swedish Radia – Standards of Excellence

Convenient Same Day Scheduling

Swedish Radia's mission is to provide excellent healthcare, and that includes making medical services as accessible as possible to our community. That's why we offer same day scheduling to help get you and your patient the answers you need quickly. We can usually accommodate same day or next day appointments for all of our exam modalities.

Call (425) 394-0650.

Fast Turn Around

It's not always clear when a patient complaint requires medical intervention. That's why we offer fast turn around reporting for our exams. Our reports are finalized and signed quickly after completion of an exam and automatically faxed to your office. All emergent results are phoned to you directly.

You can also review exams and reports on your PC as soon as they are available using the Web PACS. Visit www.swedishmedical.org/forms/psiAccessRequst.html to apply.

Did You Know...?

We use a GE 16 slice Lightspeed CT Scanner which averages about 30 seconds per exam and can quickly transform a stack of 2D images into a lifelike rotating 3D model.

- ❖ CT Angiography is routinely performed at our center as a safe, non-invasive alternative to conventional angiography.
- ❖ CT has become the primary method to diagnose appendicitis and pulmonary embolism.
- ❖ CT is not only limited to healthcare. Archeologists often use them to look inside of sealed artifacts such as "wrapped mummies."

Need patient information?

Referral forms? Directions?

Call our main number (425) 394-0650.

To schedule a patient at

Swedish Radia Imaging Center,

please call (425) 394-0660.

SWEDISH RADIA IMAGING CENTER

2005 NW Sammamish Rd, Issaquah, WA 98027

Direct: (425) 394-0650

Reading Room: (425) 394-1724

Scheduling: (425) 394-0660

www.radia.net