

Neuro Imaging at Swedish Radia

A patient presents to you with severe headache and dizziness. Is it a migraine, sinusitis, intracranial bleed, tumor or vasculitis? Patients with neurological symptoms have long been among the most challenging to diagnose and treat. Fortunately, neuro imaging has advanced significantly in recent years and has now become virtually indispensable for diagnosing neurological disease. Current cross sectional imaging allows stunningly detailed visualization of the brain, spinal cord and even individual nerves. At Swedish Radia we use a state of the art GE 1.5 Tesla magnet and 16 slice CT scanner to maximize image quality and zero in on the correct diagnosis. Here are a few recent examples from our facility:

CASE 1: This 40-year-old female presented with blurred vision and dizziness. Coronal contrast Brain MRI shows a large falcine mass consistent with a meningioma. Multiple additional meningiomas and a left acoustic schwannoma were identified consistent with a diagnosis of Neurofibromatosis Type II.



CASE 2: This 20-year-old male presented to the ER with a skull laceration after being struck in the head with a wakeboard. CT



demonstrates a depressed skull fracture with small adjacent epidural hematoma.

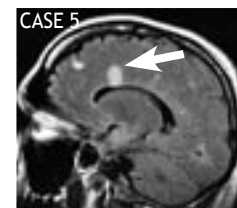
CASE 3: A 64-year-old female fell two weeks ago and presented with persistent neck pain. Sagittal reformatted CT demonstrates a displaced type III odontoid fracture. Patient went to the OR for hardware stabilization.



CASE 4: This 35-year-old male presented with chronic back pain radiating down left leg. Sagittal MRI shows a large disk protrusion at L5-S1 extending into the left neuroforamen.



CASE 5: A 42-year-old male complained of right facial numbness for two weeks. Sagittal MRI shows multiple pericallosal white matter lesions consistent with multiple sclerosis.



Dear Colleague:

I'm pleased to send you the latest issue of "Update" from Swedish Radia Imaging Center. Six times a year we will send you information about the benefit of the state-of-the-art technology and expertise we provide. Your questions/comments are welcome. Call (425) 394-1724.

Ben Babusis, M.D., Medical Director

Common Neuro Imaging Indications at Swedish Radia

- Head CT: R/O bleed in acute setting for trauma, stroke, headache or mental status changes
- Brain MRI: R/O mass, infarct, infection, inflammation, congenital abnormalities
- Brain MRA: R/O vascular occlusion, stenosis, vasculitis, aneurysm
- Spine MRI: R/O disk protrusion, mass, abscess, demyelinating disease, contusion

Swedish Radia – Full Service Imaging Center

We offer:

- Complete digital imaging (CR)
- Picture Archival System (PACS)
- 1.5 T MRI
- A 16-slice CT scanner
- Radiographic suites
- Ultrasound suite
- 3-D Ultrasound
- Portable radiographic system
- C-Arm portable fluoroscopy unit
- Speech recognition dictation system
- Open 24/7
- Staffed by board-certified radiologists and licensed technologists
- Serving both adult and pediatric patients

Need patient information?
Referral forms? Directions?
Call our main number (425) 394-0650.

To schedule a patient at
Swedish Radia Imaging Center,
please call (425) 394-0660.

SWEDISH RADIA IMAGING CENTER

2005 NW Sammamish Rd, Issaquah, WA 98027

Direct: (425) 394-0650

Reading Room: (425) 394-1724

Scheduling: (425) 394-0660

www.radia.net

Physician Liaison Joins Swedish Radia

Lisa Martz joined our team at Swedish Radia Imaging Center in July as the new Physician Liaison. Martz had previous experience as a pharmaceutical representative. She says her goal is to provide ongoing information to our referring providers and gather feedback on how to improve service. She notes, "The first time I walked into Swedish Radia I felt very comfortable. I'm excited to work with such friendly and talented staff." Martz received her B.S. in Neuropsychology from the University of Lethbridge, Alberta, Canada, where she was born and raised. She currently resides in Kirkland with her husband and 4-year-old daughter. She enjoys squash, downhill skiing, water skiing and biking.



About Swedish Radia

Swedish Radia was designed to make patients feel welcome from the moment they come through the door and a recent front desk remodel enhances that feeling. To add to the positive experience, customers will be provided with free internet access, access to an espresso stand, and a large flat screen TV.

Swedish Radia Offers...

- ❖ Same day or next day appointments for MRI, CT, Ultrasound and X-Ray
- ❖ Faxed reports within two hours through our auto fax system
- ❖ Fluoroscopic guided joint injections are now available including MR Arthrograms, performed by our full-time radiologist, Dr. Ben Babusis
- ❖ Imaging after hours through Swedish Issaquah's 24 hour emergency department
- ❖ A 99 percent "excellent" rating through our patient satisfaction survey cards
- ❖ Courier service for film or CD delivery to your office
- ❖ Easy access to our radiologist by calling the reading room at (425) 394-1724
- ❖ Voice recognition dictation system to generate final reports eliminating any transcription delays