

Superior Evaluation of Abdominal Pain with CT Imaging

A patient presents to you with abdominal pain. You perform an abdominal series and the results come back "Nonspecific Bowel Pattern." Or perhaps you order an ultrasound and the results come back "Fatty liver, otherwise unremarkable." Although these studies do exclude certain specific entities such as bowel obstruction and hydronephrosis, they may not answer the clinical question with enough specificity to guide treatment. Very often the diagnosis of abdominal pain can only be made with CT imaging. Common diagnoses that are typically seen only on CT include appendicitis, diverticulitis, mesenteric adenitis, colitis, obstructing renal stone, pyelonephritis, solid organ or bowel neoplasm, metastatic disease, and abscess, among many others. Here are a few recent examples of unsuspected diagnoses made with CT imaging at Swedish Radia Imaging Center.

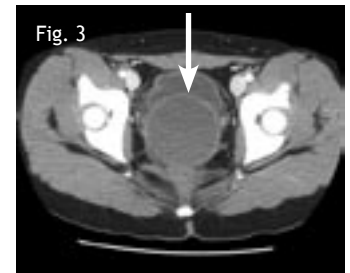
FIGURE 1: 51-year-old male presents with abdominal pain, bloating and hypertension. Coronal reformatted contrast CT shows a large proximal right ureteral stone causing moderate hydronephrosis.



FIGURE 2: 62-year-old male presents with lower abdominal pain. Abdominal-Pelvic CT shows acute diverticulitis of the sigmoid colon with a small quantity of free air but no abscess. An incidental pelvic kidney and posterior dermal cyst can also be seen on this image.



FIGURE 3: 11-year-old female presents with lower abdominal pain, nausea and fever. Abdominal-Pelvic CT showed probable mesenteric adenitis and a large collection of fluid in the vaginal and endometrial canal consistent with hydrometrocolpos.



Dear Colleague:

I'm pleased to send you the latest issue of "Update" from Swedish Radia Imaging Center. Six times a year we will send you information about the benefit of the state-of-the-art technology and expertise we provide. Your questions/comments are welcome. Call (425) 394-1724.

Ben Babusis, M.D., Medical Director

CT Imaging at Swedish Radia

Indications and Recommendations

Head/Sinus

- Rule out bleed, mass, hydrocephalus, sinusitis

Chest

- Rule out neoplasm, interstitial disease, adenopathy, PE, dissection

Abd/Pelvic

- Rule out appy, bowel inflammation, stones, neoplasm, biliary obstruction

Trauma

- Rule out fracture or bleed in any body part

CT

- Rule out vascular occlusions or stenoses

New Staff

Geniqua Harris, has joined Swedish Radia as a Patient Services Coordinator. Harris replaces Vicki Whetham, who moved out of the area. Harris brings with her strong customer service and organization skills and is looking forward to her role of patient service coordinator. She is a graduate of Eastern Washington University, with a B.S. degree in Sports Medicine, and is a Licensed Massage Therapist. She says, "Having previously volunteered with Swedish hospital, this position was a perfect opportunity to become part of the Swedish network of care. I'm proud to be part of a truly great organization."



For film requests, please call Geniqua Harris at (425) 394-1633.

Need patient information?
Referral forms? Directions?
Call our main number (425) 394-0650.

To schedule a patient at
Swedish Radia Imaging Center,
please call (425) 394-0660.

SWEDISH RADIA IMAGING CENTER

2005 NW Sammamish Rd, Issaquah, WA 98027

Direct: (425) 394-0650

Reading Room: (425) 394-1724

Scheduling: (425) 394-0660

www.radia.net

Walk In CTs Welcome

Swedish Radia welcomes "walk-in" CTs - those that require no preparation - from 8 a.m. to 5 p.m., Monday through Friday.

- ❖ CT KUB for renal stones
- ❖ Screening Sinus CTs for sinusitis
- ❖ Noncontrast Head CTs for headache/trauma, and
- ❖ Extremity CT's for trauma/pain

Please call (425) 394-0650 to let us know your patient is on his way.

Meet the Swedish Radia Imaging Center Day CT Team

No matter how you slice it, the Swedish Radia Imaging Center CT Team is here for you. Our team has a combined total of 50 years experience in computed tomography (CT) which adds value to physicians' practices by offering only the best in knowledge and experience. You and your patients are assured the highest quality of care.



Meet the Day CT team... (Pictured left to right)

Josh Teasdale, RT(R)

Teasdale joined the Swedish Radia Issaquah team as a CT/MRI technologist after working at Swedish First Hill. Prior to joining Swedish Radia he worked at Valley General Hospital. Josh was instrumental in the start-up of Swedish Radia Imaging Center by providing expertise and experience since it opened.

Wanda Haddon, B.S., MT (ASCP), RT(R)(CT)

Haddon is a senior CT/MRI Technologist and has been with Swedish Radia Imaging Center since the opening in March 2005. Prior to joining Swedish Radia, she worked in various laboratory and imaging departments in the United States and also on Kwajalein, Marshall Islands.

Jana Anderson, RT(R)(CT)

Anderson recently joined Swedish Radia Imaging Center as a CT/MRI Technologist. She brings experience in Trauma CT from her position as the Lead CT Technologist at Harborview Medical Center. Additionally, she served as the senior CT Technologist for Evergreen Radia in Kirkland.

Peter Britnell, B.A., RT(R)

Britnell has been serving patients as a Radiologic Technologist since our March 2005 opening. Prior to joining the Swedish Radia, he worked at St. Joseph's Hospital in Bellingham. He graduated with an AAS in radiography from Bellingham Technical College in 2004.