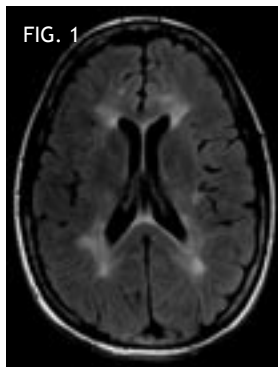


Advanced Neurological MR: Multiple Sclerosis

Multiple sclerosis is a relatively common neurological disease affecting the white matter, or myelin, coating of nerve cells. It is thought to be auto-immune, although there is an increased risk in certain families, and so genetics plays a role. The most common form is Relapsing-Remitting MS with intermittent flare-ups followed by partial or complete recovery in between. A less common form is Primary Progressive MS characterized by continuous disease progression with few flare-ups or remissions. Up to half of relapsing-remitting patients may convert to the progressive form over time.

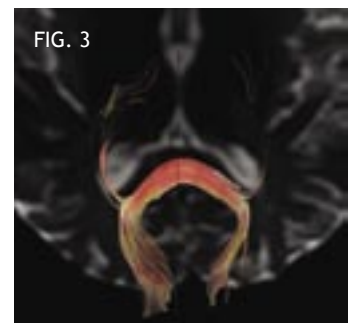
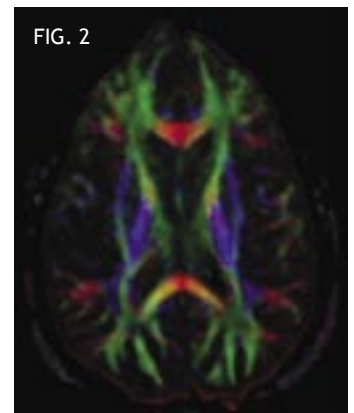
Multiple sclerosis is seen on MR studies as areas of increased T2 signal and/or enhancement in the white matter areas of the brain and spine—MS plaques. These usually increase during flare-ups and may shrink or disappear during remission. MR studies may also show progression of MS plaques in the absence of symptoms and serve as an early detector of disease progression. 3T MR finds more white matter plaques than 1.5T MR and images them with greater clarity. In one study, 11 of 40 patients fulfilled more imaging criteria of MS at 3T than at 1.5T (AJNR, 2006 Sep;27(8):1794-8).

The following case is a 37-year-old female with multiple sclerosis and increased fatigue. 3T MR imaging was performed to evaluate plaque burden. Fig. 1 is a high-resolution axial FLAIR image showing a distribution



of periventricular and deep white matter plaques typical of multiple sclerosis. None of the lesions enhanced.

In addition, white matter fiber tractography was performed to assess the integrity of the major white matter tracts of the brain. Fig. 2 is a color-coded image in which white matter tracts in blue are superior-inferior, red are left-right, and green are anterior-posterior. In this case, the major tracts are intact. White matter tracts also can be displayed in a 3D format, as seen in Fig. 3, an image of the corpus callosum splenium. ■



Dear Colleague:

I'm pleased to send you the latest issue of "Update" from Evergreen Radia Imaging Center. Six times a year, we will send you information about the benefit of the state-of-the-art technology and expertise we provide. Your questions/comments are welcome.

— Lloyd Stambaugh, MD, Medical Director
Evergreen Radia Imaging Center

3T High-Definition MRI imaging

Call today for telephone consultation.

The new Evergreen Radia GE Signa HDx 3T MR scanner is in place and according to referring physicians, the images are impressive. At Evergreen Radia, we're redefining MR imaging with the latest in multi-channel coil design and the strongest magnetic field available. With this high-performance, clinically proven scanner, you can definitively diagnose your most complex cases. In neuro or musculoskeletal imaging, or advanced body cases, 3T may provide the answers you need. For a telephone consultation on this new and exciting technology, contact Dr. Lloyd Stambaugh at (425) 952-6100.

Save the Date

March 15, 5:00-7:30 p.m.

Evergreen Radia's Open House and Provider Appreciation Event

Evergreen Radia will welcome referring providers and their staff for an open house and provider appreciation event that will provide an opportunity for us to say "thank you" for your support. We will introduce Dr. David Westman and showcase the new 3T High-Definition MRI unit, recently installed at the imaging center. Please join us for wine, hors d'oeuvres and door prizes. ■

Services at Evergreen Radia Imaging Center:

- CT
- MRI
- X-Ray
- PET/CT
- Ultrasound
- Fluoroscopy/Pain Management

To schedule a PET/CT at Evergreen Radia, please call (425) 952-6111 or toll-free (877) 738-7226, or download a PET/CT referral form from <http://www.radiax.com/pdf/EvergrnRadiaPETImagForm.pdf> and fax the completed form to (425) 952-6110.

To schedule all other diagnostic procedures at Evergreen Radia, please call (425) 899-2831.

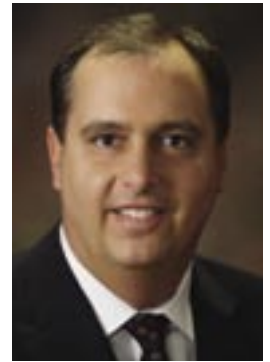
EVERGREEN RADIA IMAGING CENTER

11521 NE 128th St., Suite 200
Kirkland, WA 9803
(425) 952-6100
www.radia.net

We welcome Neuroradiologist

Dr. David G. Westman to Evergreen Radia.

He joins us from Emory University where he spent almost five years as a neuroradiologist. Dr. Westman received his undergraduate and medical degrees at The University of Western Ontario, London, Ontario, Canada. He held residencies in Radiology and Diagnostic Imaging at the University of Alberta, Edmonton, Alberta, Canada and in Plastic Surgery at the University of Western Ontario, London, Ontario, Canada. Dr. Westman held fellowships in Interventional Neuroradiology and Diagnostic Neuroradiology at the University of Toronto, Ontario, Canada and Diagnostic Neuroradiology at the University of California, Davis Medical Center, Sacramento, CA.



Pleased to be with Radia, he says, "I like the more relaxed lifestyle of the West Coast and the Pacific Northwest is particularly attractive due to the rustic, beautiful scenery and proximity to the ocean and mountains. I chose to work at Radia because I was impressed with the leadership, staff and strong commitment to quality."

Important Request for Information: National Practitioner Identifier (NPI)

Radia needs your help in obtaining NPI numbers of your physicians. As noted below in a recent communication from CMS, we need NPI numbers for all referring physicians for billing purposes.

The timeline for all providers to have their NPI assigned and to have systems updated for billing purposes is May 23, 2007.

Sharing NPIs (CMS Special Edition SE0679, Jan 2007):

"Once providers have received their NPIs, they should share their NPIs with other providers with whom they do business and with health plans that request their NPIs. In fact, as outlined in current regulation, all providers, including Medicare providers, that are HIPAA covered providers must share their NPIs with other providers, health plans, clearinghouses, and any entity that may need those NPIs for use in standard transactions, including the need to identify an ordering or a referring physician. Providers should also consider letting health plans, or institutions for whom they work, share their NPIs for them."

If your office has not applied for your physicians' NPI numbers, please visit <https://nppes.cms.hhs.gov/NPPES/Welcome.do>. The site will direct you to an on-line application form.

Please email or fax your physicians' NPI numbers to Radia:

Email cwest@radiax.com

Fax: (425) 297-6260

If you have any questions, please contact Cheryl West at (425) 297-6253. ■