

Plain X-rays Supplement Advanced Imaging at Everett

When a patient has acute pain from a fall, or if patient presents with a chronic ailment, the first imaging test is usually a plain X-ray. Since Roentgen's discovery of the X-ray in 1895, X-ray devices have been used to diagnose illnesses of all types. Over the past 110 years, X-ray devices have become essential diagnostic tools which are now in use worldwide. The early designs of a century ago have given way to much more sophisticated devices as technology has advanced.

At Everett Radia, our newly-installed X-ray machine produces high-quality digital images on small parts such as the 5th toe. This machine will also give consistent diagnostic images on challenging exams, such as an image of the abdomen of a 450-pound patient.

Plain X-ray has retained its importance to health care providers, hospitals, and clinics because it is used to screen for potential abnormalities, and to monitor treatment. Also important to note, X-ray machines are the gateway to advanced imaging such as MRI or CT scanning.

The following cases illustrate the utility of X-ray in the diagnosis of commonly encountered cases.

CASE 1

This 46-year-old man fell from a ladder and experienced severe heel pain. A plain X-ray shows extensive abnormality of the



Lateral view of the foot shows extensive diffuse calcaneal abnormality.

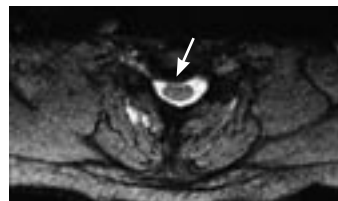
calcaneus. The sagittal CT reformatted image shows an extensively comminuted fracture. The additional information from the CT helped to determine treatment. Plain X-rays will help monitor treatment.



Sagittal CT image shows an extensively comminuted calcaneal fracture.

CASE 2

This 34-year-old woman complains of gradually worsening neck and arm pain over the past 18 months with no history of trauma. Plain films show no bony abnormality. Because of her worsening symptoms, MRI was performed which showed a focal disk protrusion.



Axial T2 weighted MRI scan shows a focal disk protrusion (arrow).



Lateral C-spine X-ray shows no bony abnormality, however is incomplete because the lower part of the cervical spine is not seen.

Dear Colleague:

I'm pleased to send you the latest issue of "Update" from Everett Radia Imaging Center. Six times a year, we will send you information about the benefit of the state-of-the-art technology and expertise we provide. Your questions/comments are welcome. My pager number is (425) 339-0379.

Don Peters, M.D., Medical Director

Plain X-ray Imaging at Everett Radia

Common Indications

Extremity

- Falls
- Chronic, repetitive injury
- Fracture follow up
- Arthritis

Chest

- Cough
- Shortness of breath
- Chest pain
- Trauma

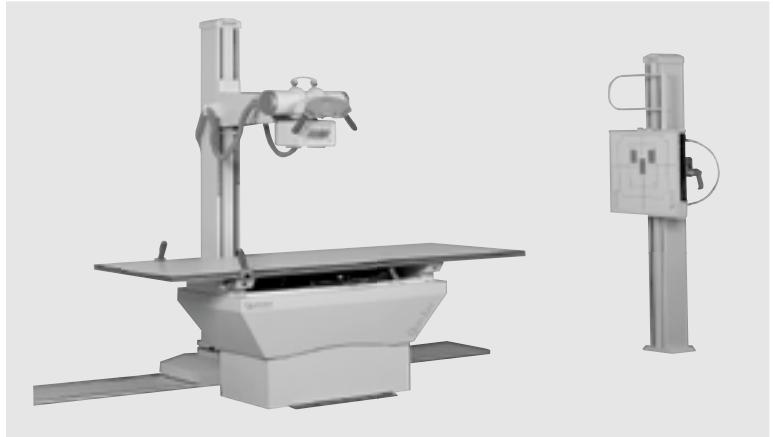
Abdomen

- Bowel obstruction or perforation
- Acute or chronic pain
- Renal stones
- Foreign bodies (in children)

Spine

- Localized pain
- Pain radiating to arms or legs
- Trauma
- Scoliosis

New X-ray Available



In late March, Everett Radia added a digital Quantum X-ray unit. The new digital X-ray unit will allow the technicians at Everett Radia to print your patients' images onto a CD or film. You can indicate your preference as to how you would like to receive the images on our referral forms.

Why send your patients to Everett Radia for an X-ray?

We provide:

- ❖ Insurance pre-authorization and verification
- ❖ Images and reports on community PACS
- ❖ Patients' images on CD or film
- ❖ Same day add on's and walk-in ability
- ❖ Same day reporting
- ❖ 500 pound weight limit
- ❖ Convenient, free parking
- ❖ Friendly and caring staff

Updated Referral Forms

We have updated our referral forms to include X-ray along with some of the common X-ray exams that may be ordered, such as chest, KUB, acute abdominal series, sinus, skull, cervical spine, thoracic spine and lumbar spine. If your office has not yet received an updated Everett Radia referral pad, please call (425) 297-6278.

**To schedule a patient at Everett Radia,
please call (425) 787-5660.**

Need patient information? Referral forms?
Directions? Visit us at
www.radia.net

EVERETT RADIA IMAGING CENTER

3822 Colby Avenue
Everett, WA 98201-4966
Scheduling: (425) 787-5660
www.radia.net

Everett Radia Welcomes New Medical Director

Don Peters, MD, has become the new Medical Director at Everett Radia, replacing Ben Harmon, MD, who has expanded his role to all Radia sites.

Peters began his career in Everett with Radiology Associates in 1978, which became Radia in 1997. For 10 years, he served as Medical Director of The Everett Clinic. He has a medical degree from the University of Oregon, and did his internship and residency at Santa Clara Valley Medical Center. His fellowship in Chest Radiology and Neuroradiology was completed at UC San Francisco, and his subspecialty is Neurological Imaging. "I'm pleased to be at Everett Radia," he says. "I enjoy the patient-focused environment and am impressed by the level of expertise of the staff. I'm looking forward to getting to know all of the providers we serve." You can reach Dr. Peters by pager (425) 339-0379 or call him directly at (425) 787-5666.

