

Antenatal Sonography

CASE 1. Ectopic Pregnancy

Ectopic pregnancy is an important health concern because it is the most frequent cause of pregnancy related deaths in the first trimester. The incidence of ectopic pregnancy has been increasing over the last few decades for reasons that are not completely clear. Increasing incidences of pelvic inflammatory disease, fertility therapies and other disorders that impair fallopian tube function have been implicated. The classic triad of pain, bleeding and adnexal mass is present in less than half of patients. Endovaginal ultrasound is the best test when a woman in the first trimester of pregnancy presents with a positive serum pregnancy test and unexplained pain or bleeding.

In practice, a negative serum pregnancy test excludes ectopic pregnancy. Women who have a negative serum pregnancy test and present with abdominal or pelvic pain may have appendicitis or diverticulitis and a CT scan is needed.

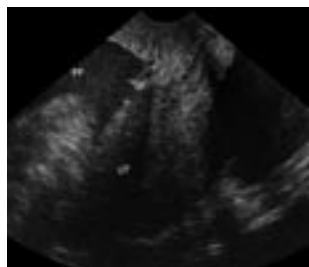


Fig. 1. 27-year-old woman with a positive serum pregnancy test and first trimester bleeding. Transabdominal ultrasound shows an empty uterus (UT), and a moderate amount of echogenic fluid (FF).



Fig. 2. Endovaginal ultrasound shows the uterine fundus (UT), echogenic free fluid, and an adnexal mass (AM).



Fig. 3. Antenatal ultrasound at 20 weeks shows a cleft lip (arrow). No other anomalies were seen at sonography.

Ultrasound imaging can help you sort out diagnostic dilemmas in obstetric patients. At Everett Radia, we have three state-of-the-art ultrasound machines and are skilled at providing quick, clear, accurate diagnoses for your patients. Your patient's exams are performed in a warm, caring environment.

The documentation of a normal intrauterine pregnancy effectively excludes ectopic pregnancy. The exceptions are patients at high risk including previous ectopic or women undergoing fertility treatment. Even in these high risk patients, the risk of concomitant intrauterine pregnancy and ectopic pregnancy (known as "heterotopic" pregnancy) is quite low.

CASE 2. Cleft Lip

Fetal anatomic survey is the most common indication for second trimester obstetric ultrasound scanning. Fetal anatomy is typically best seen at around 18 to 20 weeks because of the high *relative* volume of amniotic fluid. In fetuses with cleft lip/palate, the full extent of the cleft lip/palate may not always be determined prenatally because 80% of fetuses with cleft lip also have cleft palate. The more severe forms are more likely to be associated with

aneuploidy (10%) and a search for other anomalies (27%) is imperative. Malformations involving the central nervous, skeletal, urogenital and cardiovascular systems are more common in fetuses with cleft lip/palate. Cleft lip is often repaired around two to three months of age and cleft palate is often repaired at nine to 18 months.

Dear Colleague:

I'm pleased to send you the latest issue of "Update" from Everett Radia Imaging Center. Six times a year, we will send you information about the benefit of the state-of-the-art technology and expertise we provide. Your questions/comments are welcome. My pager number is (425) 339-0379.

Don Peters, M.D., Medical Director

Antenatal Sonography at Everett Radia Imaging Center

Indications

- First trimester bleeding or pain
- Fetal number
- Fetal presentation
- Growth assessment
- Anatomic screening
- Placental assessment
- Maternal abdominal pain



Physician Survey Shows Satisfied Customers

Everett Radia recently surveyed 150 referring providers in the Everett community in an effort to determine the overall satisfaction with our radiology services. This year, two new questions were asked and the results are below.

The three most important reasons why providers choose an imaging center are:

- ❖ Quick scheduling of patients
- ❖ Speed in receiving results
- ❖ Quality and accuracy of report

When asked, "What would you like us to know about our services?" providers responded by saying:

- ❖ You have great turnaround time on reports and great schedulers.
- ❖ I like the fact that you have walk-in exams for Sinus CTs.
- ❖ I think you guys are doing a great job - keep up the great work!
- ❖ Services are great!
- ❖ Great staff!
- ❖ We love the plain X-ray availability.
- ❖ Many patients compliment the quality of service.
- ❖ Always been great!

Third Ultrasound Room Added

Everett Radia has added a third Ultrasound scanning room utilizing a **Siemens Antares 3D/4D system**. The Antares system represents the most advanced technology in Ultrasound imaging, providing consistent, superior imaging across a broad range of patients. Everett Radia provides:

- ❖ Viewing monitors on all Ultrasound suite walls for patient and family viewing.
- ❖ RDMS registered sonographers with more than 50 years of combined experience.
- ❖ 24-hour report turnaround time for all exams.
- ❖ Convenient hours of operation from 7:45 a.m. to 6:00 p.m. (Monday - Friday).
- ❖ Pleasant, calming atmosphere with an experienced and friendly staff.

EVERETT RADIA IMAGING CENTER

3822 Colby Avenue
Everett, WA 98201-4966
Scheduling: (425) 787-5660
www.radia.net

Need patient information?
Referral forms? Directions?
Visit us at www.radia.net

To schedule a patient at
Everett Radia, please call
(425) 787-5660.