

Ultrasound at Everett Radia

Obstetric Ultrasound is performed during all stages of pregnancy at Everett Radia. Certification of the ultrasound laboratory by the American Institute of Ultrasound in Medicine (AIUM) ensures your patient's ultrasound exams consistently meet the high quality standards of the AIUM, an internationally recognized accreditation body. Our exams are reported in a standardized format, including a graphic depicting fetal growth. Our reporting package is somewhat customizable, so if you have questions or suggestions about the format of the report, please call.

In certain cases we do three-dimensional imaging, a technique that can help with the diagnosis and characterization of complex anomalies. A 3D picture also gives prospective parents a glimpse into the future.



Facial profile of a 26-week fetus



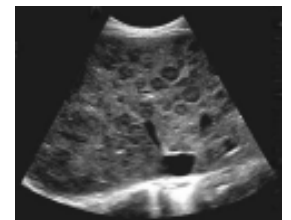
Three-dimensional image of a 26-week fetal face

Gynecologic ultrasound with high-resolution transabdominal and endovaginal scanning is a potentially life-saving diagnostic test performed at Everett Radia. Conditions such as ovarian neoplasia, benign adnexal cysts, endometrial disorders, uterine myomas and ectopic pregnancy are readily diagnosed with this test and with the salient clinical data.



Endovaginal image of an ectopic tubal pregnancy. Note the thick adnexal ring which is distinct and separate from the ovary. This sign is highly accurate in the diagnosis of ectopic pregnancy.

Abdominal ultrasound is used as a screening tool for liver nodules in patients with cancer, elevated liver function tests, cirrhosis, hepatitis, and suspected biliary disease. A qualitative estimate of vascularity within nodules is readily performed with color-flow Doppler.



Ultrasound image of numerous liver nodules in a patient with metastatic colon cancer

Continued on reverse...

Dear Colleague:

I'm pleased to send you the latest issue of "Update" from Everett Radia Imaging Center. Six times a year, we will send you information about the benefit of the state-of-the-art technology and expertise we provide. Your questions/comments are welcome. My cell phone number is (425) 422-0300.

Ben Harmon, M.D., Medical Director

Ultrasound at Everett Radia Imaging Center

Indications

For Obstetric Ultrasound

- Objective determination on fetal age, especially when LMP is uncertain
- Routine mid-trimester fetal anatomic survey
- Assessment of fetal well-being with Biophysical profile and amnionic fluid index
- Evaluate for the presence of fetal stress with cord Doppler and middle cerebral artery Doppler
- Potentially determine the source of vaginal bleeding in pregnancy

For Gynecologic Ultrasound

- Assessment and characterization of adnexal masses
- Survey for source of pelvic pain
- Evaluation of post-menopausal bleeding
- Sonohysterography for additional endometrial characterization in post-menopausal bleeding

For Abdominal Ultrasound

- Survey for source of abdominal pain
- Assessment of gallbladder and biliary tree
- Screening for abnormalities in patients with elevated lab tests
- Evaluation for hydronephrosis

Benefits:

- Rapid, accurate diagnosis
- State-of-the-art technology
- Rapid report turnaround time
- Non-invasive, NO injections, NO radiation

Patient experience

- Convenient free parking, close to entrance
- Little or no waiting
- Same day add-ons available
- Every patient treated with respect and dignity

Did You Know...?

A Soothing Experience

Innovation is occurring right here at Everett Radia. We are using a new product that combines the patient ultrasound experience with soothing aroma therapy. It is called *Essoula Comfort ultrasound scanning gel*, and it's used as the coupling agent in routine ultrasound scanning. In one preliminary survey, more than 80 percent of patients prefer Essoula; however, your patient can choose Essoula or routine ultrasound gel.



Insurance Benefits Differ

Covered clinical indications for an ultrasound test may vary significantly among third party payors. For example, certain indications covered by one payor may be excluded by another. Please call our scheduling line (425)787-5660 to clarify if you have any questions. We want to be sure your patients get the test they need, and as much as possible, be sure the tests we perform are covered services.



We're proud to introduce a valued member of our Everett Radia team:

Danielle Grafe, RDMS, has been a sonographer with Everett Radia for three years. "I truly enjoy working with everyone at Everett Radia. The people here are knowledgeable, professional, considerate, and all around fun! We're a team, and we help each other. Our focus is to provide the best care possible to our patients and take care of the needs of the referring physicians in a timely manner. We value each patient as if he or she were a member of our own family, treating them with respect, greeting them with a smile, and using top quality technology, providing accurate results they can trust."



Hilary Anderson of Marysville says: *"Everett Radia is amazing! I received the best service from everyone – from my first phone call to reception to the exceptional techs. The staff is professional, friendly and Danielle is outstanding." Anderson, an Optometric Technician in Bellevue, had several ultrasounds during her pregnancy with daughter Kristine two years ago and is pregnant with her second child. She says "I'd never go anywhere else!"*

Need patient information? Referral forms? Directions? Check out our new website: ***www.radia.net***

To schedule a patient at Everett Radia, please call (425) 787-5660. Ultrasound hours: 8-5

EVERETT RADIA
3822 Colby Avenue
Everett, WA 98201-4966