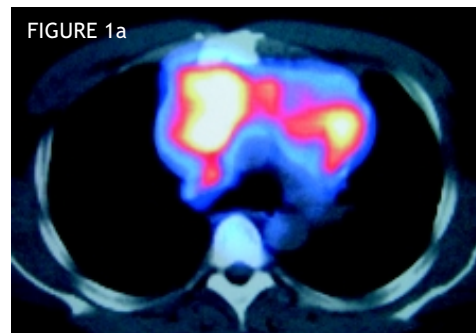


## PET/CT Imaging of Lymphoma

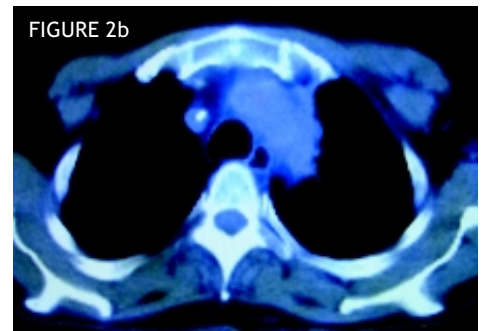
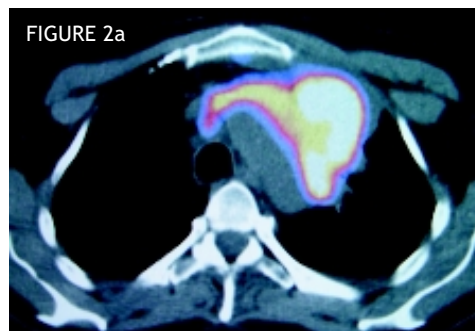
### CASE 1

The first case is a 35-year-old gentleman with recent diagnosis of Hodgkin's disease and bulky mediastinal lymphadenopathy. A PET/CT was ordered for initial staging. An axial image (Fig. 1a) of the chest demonstrates the mediastinal mass with markedly increased FDG uptake – 10 to 14 times background activity. In addition, a sagittal image (Fig. 1b) demonstrates unexpected skeletal involvement in multiple vertebrae. This upstaged the lymphoma from Stage II to Stage IV, and was useful in treatment planning and prognosis.



### CASE 2

The second case is a 60-year-old gentleman with a non-Hodgkin's B-cell lymphoma in the mediastinum. Initial staging with PET/CT revealed a 6 x 7 cm Stage II tumor (Fig. 2a) confined to the chest with an impressive FDG uptake of 31 SUV—or 31 times background activity. Follow-up PET/CT exam 7 months later was performed to assess response to therapy. Although there is a residual 2 x 4 cm mass adjacent to the aortic arch (Fig. 2b), the FDG uptake has decreased to 2.3 SUV and is consistent with a complete response to therapy.



*Dear Colleague:*

*We're pleased to send you the latest issue of "PET/CT Report" from Evergreen Radia Imaging Center. Six times a year, we will send you information about the benefits of the state-of-the-art technology and expertise we provide. Your questions/comments are welcome.*

- Lloyd Stambaugh, M.D., Medical Director, Evergreen Radia Imaging Center
- Sanjiv Parikh, M.D., Diagnostic Radiology, Nuclear Medicine and Interventional Radiology
- David Atkins, M.D., Diagnostic Radiology and Nuclear Medicine

## PET/CT Imaging at Evergreen Radia Imaging Center

### Indications

- Initial staging or restaging of lymphoma
- Determine response to therapy – metabolic response seen earlier than tumor shrinkage
- Help establish diagnosis of lymphoma – lymphadenopathy of unknown etiology
- Improved tumor detection and localization

### Referring Physician

- Timely, accurate reporting
- Excellent image quality
- State-of-the-art technology
- Immediate access to a Radia specialist for consultation
- Image fusion for diagnosis and therapy planning

### Patient Experience

- Convenience of a single scan
- Little or no waiting
- Soothing, comfortable environment
- Free parking and convenient location
- Every patient treated with respect and dignity

To schedule PET/CT at Evergreen Radia, please call 425-952-6111 or toll-free 877-738-7226

OR

Download a PET/CT referral form from <http://www.radiax.com/pdf/EvergrnRadiaPETImagForm.pdf>

Complete all information required and fax to (425) 952-6110.

## Did You Know...?

PET/CT imaging is more accurate than CT alone in predicting the response of lymphomas to chemotherapy. PET has been shown to be 87 percent sensitive in predicting chemotherapy response after only one to two cycles of chemotherapy.

*J Nuc Med. 2003 Feb;44(2):224-39 and Eur J Nucl Med Mol Imaging. 2004 Jan;31(1):22-8*



## PET/CT has proven effective in the diagnosis and staging of many tumors including:

- Non-small cell lung and single pulmonary nodule
- Colorectal cancer
- Lymphoma
- Thyroid cancer
- Breast cancer restaging
- Head/neck cancer
- Melanoma
- Esophageal cancer



## Medicare to Cover PET for Alzheimer's

The Centers for Medicare and Medicaid Services (CMMS) recently released criteria to guide the use of PET with FDG to "distinguish patients with Alzheimer's disease from those with other causes of symptoms confounding the diagnosis of dementia, or to assist with the diagnosis of early dementia in beneficiaries for whom the differential diagnosis includes one or more kinds of neurodegenerative disease, in cases for which the referring physician's medical record documents several other criteria are met." The criteria include progressive decline (at least six months' history with at least two appointments in the chart notes), other tests and exams are inconclusive, treatment or care plan is dependent on the diagnosis, etc. For complete information, please refer to [www.radiax.com/healthcare\\_pros/resources.asp](http://www.radiax.com/healthcare_pros/resources.asp), or view the final decision memo issued by the CMS at [www.cms.hhs.gov/mcd/viewdecisionmemo.asp?id=104](http://www.cms.hhs.gov/mcd/viewdecisionmemo.asp?id=104)

Evergreen Radia is a Medicare participating provider and if the exam is a covered service, we will bill Medicare and the patient's supplement, if they have one. Medicare requires:

- Most recent CT
- Chart notes
- Pathology report if available

The more documentation we have, the more likely it is Medicare will

approve payment for the procedure. We will schedule your patient within two days if no secondary insurance preauthorization is required. However, if it is, scheduling depends on preauthorization from the secondary insurance company which could take as long as 30 days (CIGNA) or as little as three days (Regence). Please call our scheduling office with any questions.

### Other services at Evergreen Radia Imaging Center:

- CT
- MRI
- X-Ray
- Ultrasound
- Fluoroscopy/Pain Management

To schedule any of these procedures, call 425-899-2831.

**EVERGREEN RADIA  
IMAGING CENTER**

11521 NE 128th St., Suite 200  
Kirkland, WA 98034

Need patient information?  
Referral forms? Directions?

Check out our NEW  
website: [www.radia.net](http://www.radia.net)